

Who we are:

We are committed to providing innovative and affordable mobility solutions to get you moving as soon as possible after injury or surgery and for the duration of your recovery – free to go about your busy, active life – and have a little fun doing it. We are all about leaving the painful crutches behind and giving you the Freedom to Move.

The KneeRover® Team is Driven to Change Your Outcome!

Your Satisfaction is Our Top Priority.

Need Parts or Accessories?

Add an accessory like a cup holder or headlight to enhance your experience on your new KneeRover® All Terrain scooter. Keep your scooter operating in top shape with original manufacturer parts. Visit our exclusive online partner: kneewalkershop.com, to explore our full range of parts and accessories.

Need Help – Contact Us:

Phone: 1- 877-737-9877

Web: www.kneerover.com



KneeRover® Jr. - All Terrain User Manual

Congratulations on your purchase of a KneeRover® All Terrain Scooter!

Experience a new level of freedom with the breakthrough innovation of the KneeRover® Jr. – the first all terrain KneeRover® scooter designed for small adults and children. Whether you are at home, at work, on the trail, or on the town, the KneeRover® scooter will keep you on the move, safely navigating everyday life with ease and adding a little fun along the way.

Operating Instructions:

This medical device is designed to maximize mobility during your recovery from foot/ankle surgery or injury.

Place the knee of your injured leg on the knee platform and stand as straight as possible. Adjust the handlebar to waist height so the arms and hands are in a comfortable position. Adjust the knee platform so that your injured leg is supported at a 90 degree angle when standing.

Ensure that the hand brake is fully engaged before mounting the KneeRover® scooter. To move the scooter, simply push forwards or backwards with your good foot. Allow the scooter to glide, and as it slows down, push again.

Safety First:

The KneeRover® All Terrain scooter is designed for easy steering and stopping and should be used to carefully move about at slow, controlled speeds. When turning the scooter you should have the brake applied and be moving at a slow, safe, controlled speed. It is easy to tip the scooter if you are making a turn with too much speed. Use caution and balance and operate at your own risk.

With routine use, nuts and bolts on the steering column, steering mechanism, and brake mechanism can and likely will become loose. Periodically check nuts and bolts after use and re-tighten as appropriate.

Limited Lifetime Warranty

This warranty applies only to the original purchaser.

This device was built to exacting standards and carefully inspected prior to shipment. Your KneeRover® brand product is warranted to be free of defects in materials and workmanship for a period of one year from the date of purchase. The side frames and cross braces are warranted for the lifetime of the KneeRover® scooter.

This warranty does not cover device failure due to owner misuse, negligence, or normal wear and tear. The warranty does not extend to non-durable components, which are subject to normal wear and need periodic replacement. These components include, but are not limited to tires, grips, brake pads and upholstery.

The warranty shall not apply for damages or defects caused by unauthorized parts, attachments or repairs, negligence, accident, or any circumstances beyond the control of KneeRover®, such as improper operation, maintenance or storage.

If you have any questions regarding your KneeRover® product or this warranty, please contact our Customer Care Team. We are available, for your convenience, toll free at 1-877-737-9877, Monday – Friday from 9 am to 5 pm Eastern.

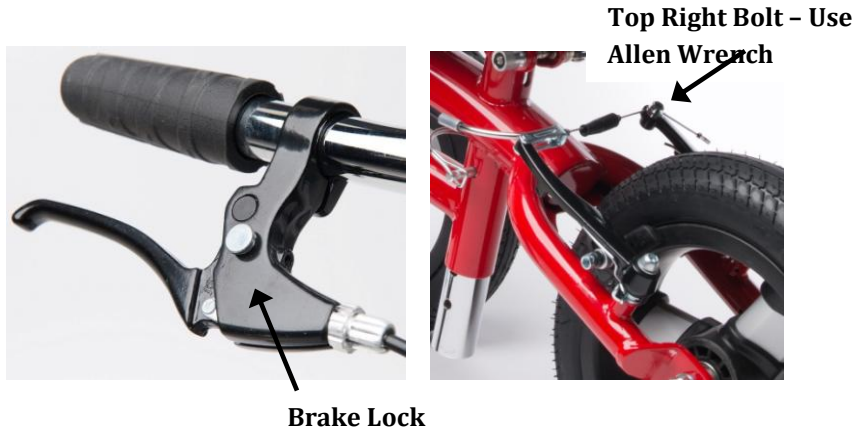


Setup Continued & Maintenance:

Step 5: Brake Adjustment

To engage the brake, depress brake lever on handle bar. The KneeRover® All Terrain scooter comes equipped with a brake lock / parking brake. Simply squeeze brake handle firmly and press the button to engage the lock. To release the lock, squeeze the brake handle again.

If needed, the brake can be adjusted to avoid brake pad(s) from rubbing a spinning back wheel with a disengaged brake. Use the provided smaller allen wrench to make adjustments. Approaching the scooter from behind you can loosen or tighten the brake cable by loosening the top right bolt, adjusting brake cable, and re-tightening bolt.



Ongoing Maintenance

With routine use, nuts and bolts on the steering column, tie rod steering mechanism, and brake assembly can become loose. To ensure safe continuous operation of this KneeRover® scooter it is important to periodically inspect the scooter for loose nuts and bolts and re-tighten as appropriate. Also, check the tire pressure routinely to ensure that tires are properly inflated between 22 and 28 psi. Be careful not to over inflate the tires.

KneeRover® Jr. Set Up Instructions:

Please follow the step by step instructions on the following pages to properly assemble your KneeRover® All Terrain scooter. The diagram below identifies the key components of the scooter to aid with assembly.

Weight Capacity = 250 pounds



Setup Instructions:

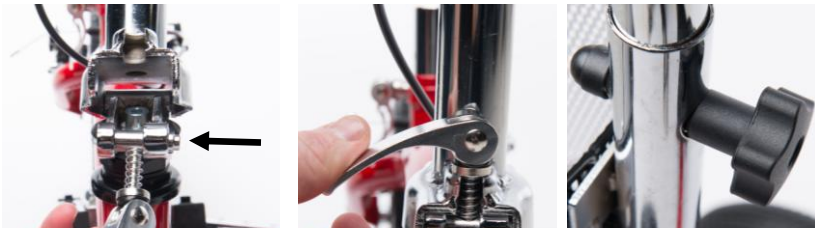
Step 1: Install Front Axle

Please take your time to carefully complete all steps before operating your KneeRover® scooter. Once the packing material is removed, install the front axle using the 2 bolts and allen wrench provided. Place the front axle under the frame, align the holes, insert the bolts, and tighten using the allen wrench as shown in left photo. The photo in the middle is how the axle should look when fully installed. The tie rods should be assembled as shown in the right photo with one tie rod on top of the black guide, and one below, with the nut tightened firmly at the bottom.



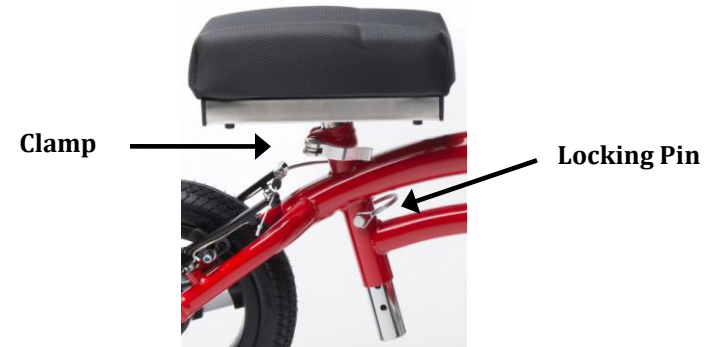
Step 2: Install Steering Column

The steering column will be in a folded position when unpacking. When facing the front of the KneeRover® scooter, raise the steering column and push the security pin in the clamp to the left (as shown in left photo) to allow the column to lock into place. Raise the clamp lever upward and tighten by turning it clockwise. Finally, push clamp lever down firmly to secure the steering column (as shown in center photo). Reverse these steps when needing to lower steering column for transport. Once knee platform is installed, use the black knob (shown in right photo) to set the handlebars at a comfortable height for operation.



Step 3: Install Knee Platform

The knee platform is designed to be used with either the right or left leg. Remove the knee platform from the bottom of the KneeRover® scooter by removing the locking pin and loosening the clamp. Next insert the knee platform post into the receptacle tube and set the knee platform at your desired height for use by inserting the locking pin through the aligned holes. Finally, tighten the clamp to secure the knee platform in place.



Step 4: Attach Basket & Inflate Tires

Removable basket attaches to the steering column. The pneumatic tires come partially inflated. It is important to inflate all three tires to the correct pressure (between 22 and 28 psi) the same way you inflate a bike tire. Be careful not to over inflate the tires.

