



## KneeRover<sup>®</sup> Knee Walker Jr. User Manual



### **Congratulations on your purchase of the KneeRover<sup>®</sup> Knee Walker Jr!**

*Experience a new level of freedom with the KneeRover<sup>®</sup> Knee Walker Jr. – the first pediatric knee walker designed for children and small adults. This revolutionary product enables users the freedom to get back to their daily routines and enjoy life while recovering.*

#### **Operating Instructions:**

This medical device is designed to maximize mobility during your recovery from foot/ankle surgery or injury.

Place the knee of your injured leg on the knee platform and stand as straight as possible. Adjust the handlebar to waist height so the arms and hands are in a comfortable position. Adjust the knee platform so that your injured leg is supported at a 90 degree angle when standing.

Ensure that the hand brake is fully engaged before mounting the KneeRover<sup>®</sup> scooter. To move the scooter, simply push forwards or backwards with your good foot. Allow the scooter to glide, and as it slows down, push again.

#### **Safety First:**

The KneeRover<sup>®</sup> scooter is designed for easy steering and stopping and should be used to carefully move about at slow, controlled speeds. When turning the knee walker you should have the brake applied and be moving at a slow, safe, controlled speed. It is easy to tip the scooter if you are making a turn with too much speed. Use caution and balance and operate at your own risk.

With routine use, nuts and bolts on the steering column and brake mechanism can and likely will become loose. Periodically check nuts and bolts after use and re-tighten as appropriate.

# Knee Walker Jr. Set Up Instructions:

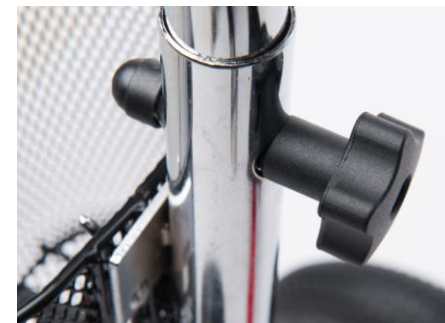
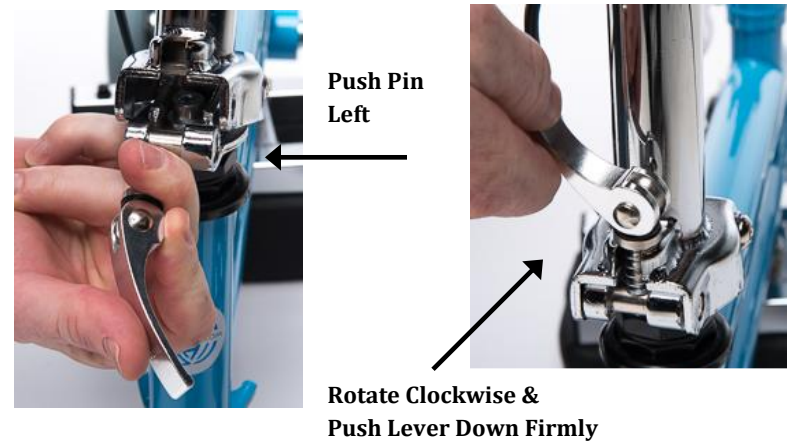
Please follow the step by step instructions on the following pages to properly assemble your KneeRover® scooter. The diagram below identifies the key components of the scooter to aid with assembly.

**Weight Capacity = 160 pounds**



## Step 1: Install Steering Column

Please take your time to carefully complete all steps before operating your KneeRover® scooter. The steering column will be in a folded position when unpacking. When facing the front of the scooter, raise the steering column and push the security pin in the clamp to the left (as shown in the top left photo) to allow the column to lock into place. Raise the clamp lever upward and tighten by turning it clockwise. Finally, push clamp lever down firmly to secure the steering column (as shown in top right photo). Reverse these steps when needing to lower steering column for transport. Once knee platform is installed, use the black knob (shown in bottom photo) to set the handlebars at a comfortable height for operation.



## Step 2: Install Knee Platform

The knee platform is designed to be used with either the right or left leg. Remove the knee platform from the bottom of the KneeRover® scooter by removing the locking pin and loosening the clamp. Next insert the knee platform post into the receptacle tube and set the knee platform at your desired height for use by inserting the locking pin through the aligned holes. Finally, tighten the clamp to secure the knee platform in place.



## Step 3: Attach Basket

Removable basket attaches to the steering column.



## Step 4: Brake Operation

To engage the brake, squeeze the brake lever on handle bar.

The KneeRover® scooter comes equipped with a brake lock / parking brake. Simply squeeze brake handle firmly and press the button to engage the lock. To release the lock, squeeze the brake handle again.



Brake Lock

## Ongoing Maintenance

With routine use, nuts and bolts on the steering column, knee platform, and brake assembly can become loose. To ensure safe continuous operation of this KneeRover® scooter, it is important to periodically inspect the scooter for loose nuts and bolts and re-tighten as appropriate.

## Who we are:

We are committed to providing innovative and affordable mobility solutions to get you moving as soon as possible after injury or surgery and for the duration of your recovery – free to go about your busy, active life – and have a little fun doing it. We are all about leaving the painful crutches behind and giving you the Freedom to Move.

The KneeRover® Team is Driven to Change Your Outcome!

## Your Satisfaction is Our Top Priority:

Thank you for your business – we appreciate having you as a customer!

We hope that you are completely satisfied with your purchase. If you have any issues, please contact us and we will do everything possible to help you. Reviews have a significant impact on our small business. If you purchased this product on Amazon or eBay, we would greatly appreciate a review once you've had a chance to use your new KneeRover® scooter. We hope we've earned a 4 or 5 star review – if not, please give us the opportunity to help you before leaving a review. Thank you for your support. We appreciate you!

## Need Help – Contact Us:

Phone: 1- 877-737-9877

Email: [help@kneerover.com](mailto:help@kneerover.com)

Web: [www.kneerover.com](http://www.kneerover.com)



KneeRover® is a registered trademark of Capital Grade Imports LLC.

## Limited Lifetime Warranty

This warranty applies only to the original purchaser.

This device was built to exacting standards and carefully inspected prior to shipment. Your KneeRover® brand product is warranted to be free of defects in materials and workmanship for a period of one year from the date of purchase. The side frames and cross braces are warranted for the lifetime of the KneeRover® scooter.

This warranty does not cover device failure due to owner misuse, negligence, or normal wear and tear. The warranty does not extend to non-durable components, which are subject to normal wear and need periodic replacement. These components include, but are not limited to tires, grips, brake pads and upholstery.

The warranty shall not apply for damages or defects caused by unauthorized parts, attachments or repairs, negligence, accident, or any circumstances beyond the control of KneeRover®, such as improper operation, maintenance or storage.

If you have any questions regarding your KneeRover® product or this warranty, please contact our Customer Care Team. We are available, for your convenience, toll free at 1-877-737-9877, Monday – Friday from 9 am to 5 pm Eastern.

## Need Parts or Accessories?

Add an accessory like a deluxe backpack, knee pad cover, cup holder or headlight to enhance your experience on your new KneeRover® scooter. Keep your scooter operating in top shape with original manufacturer parts. Visit our exclusive online partner: [kneewalkershop.com](http://kneewalkershop.com), to explore our full range of parts and accessories.